

CardBus 10/100 Ethernet PC Card Adapter

Quick Installation Guide

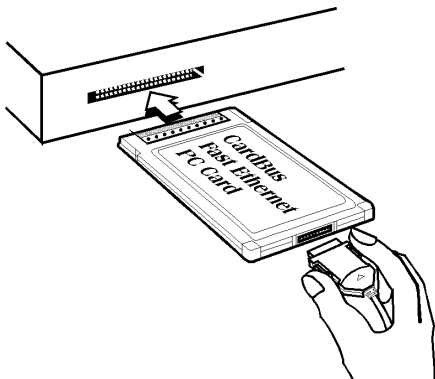
HARDWARE INSTALLATION

This chapter describes how to install the CardBus 10/100M dual-speed PC Card in your notebook computer and connect it to network. It's referred to "the PC Card" in this manual.

The PC Card could be connected to either 100Mbps Fast Ethernet or 10Mbps Ethernet over unshielded twisted pair (UTP) cable. The PC Card has the ability of automatic sensing and operating on either speed without manual reconfiguration.

Inserting the CardBus Dual-Speed PC Card

1. Hold the CardBus PC Card with wide connector toward the slot and the brand label facing upward.
2. Insert the CardBus PC Card and push it firmly into the bottom. (Please see the figure on the next page for reference)



Removing the CardBus Dual-Speed PC Card

It's quite different for various computer mechanical designs. Please refer to the PC Card removal instruction in the document for your notebook computer.

Connecting and Removing the Cable of Media Coupler to the CardBus PC Card

Grasp the PC Card 15-pins connector at the end of the media coupler with the pointing triangle facing upward. Gently insert it into the mating connector on the PC Card until it clicks in place at both sides.

Attention should be paid when removing the 15-pins connector. Please press the both sides of the connectors before dragging it out of the PC Card.

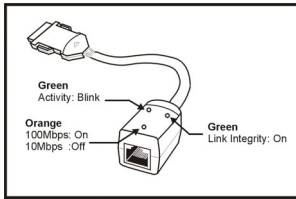
Connecting to the Network

Connect unshielded twisted pair (UTP) cable to the RJ-45 connector of media coupler before loading any network driver.

Note: This is not for telephone line connection.

- For operation in the 100Mbps (100Base-TX) Ethernet network, a Category 5 unshielded twisted pair(UTP) cable should be used to connect between media coupler and 100Mbps hub or switch.
- For operation in the 10Mbps (10Base-T) Ethernet network, Category 3, 4 or 5 unshielded twisted pair (UTP) cable could be used to connect between the media coupler and a 10Mbps hub or switch.

LED Indicators



Activity: Blinks green when transmitting/receiving data.

10/100Mbps: off /on

Link: Glows green when linked to a local network net.

SOFTWARE INSTALLATION

Windows 95 Installation

1. Assumed the drivers of PC Card slot are well installed. The *System Icon* in the *Control Panel* can report on its functionality. Apart from the above mentioned, any questions on this layer need to be taken up with the computer's manufacturer.
2. Insert the PC Card into the slot. In *New Hardware Found* dialog box, select *Driver from disk provided by hardware manufacturer*.
3. Please input the path, *A:* and insert driver diskette. The driver will be installed and you may be asked for the original Windows 95 CD/disks.
4. For the first time installation, please click *Network* icon in *Control Panel* to add Protocols, Client and Service if you needed.
5. Reboot the machine and the card will be fully functional.

Windows 98 Installation

1. Assumed that the drivers of PC Card slot are well installed. The *System Icon* in the *Control Panel* can report on its functionality. Apart from above mentioned, any questions on this layer need to be taken up with the computer's manufacturer.

2. Insert the PC Card into the slot. In *New Hardware Found* dialog box, select **Driver from disk provided by hardware manufacturer**.
3. Windows will prompt a **ADD NEW HARDWARE WIZARD** dialog box, then press Next.
4. Then Windows will prompt a **ADD NEW HARDWARE WIZARD** dialog box. In this time, select **Search for the ...** and press **Next**.



5. Windows will prompt a **ADD NEW HARDWARE WIZARD** dialog box. In this time, select **Floppy disk drives** and please insert driver diskette. Then press **Next**, the driver will be installed and you may be asked for the original Windows 98 CD/disks.



6. For the first time installation, please click **Network** icon in **Control Panel** to add Protocols, Client and Service if you needed.

7. Reboot the machine and the card will be fully functional.

Windows 2000 Installation

1. Assumed that the drivers of PC Card slot are well installed. The **System Icon** in the **Control Panel** can report on its functionality. Apart from above mentioned, any questions on this layer need to be taken up with the computer's manufacturer.
2. Insert the PC Card into the slot, and wait for the install wizard.
3. Windows will prompt a **Found New Hardware Wizard** dialog box, then press Next.



4. Then Windows will prompt a ***Install Hardware Device Drivers*** dialog box. In this time, select **Search for a suitable driver for my device (recommended)** and press **Next**.
5. Windows will prompt a ***Locate Driver Files*** dialog box. In this time, select **Floppy disk drives** and please insert driver diskette. Then press **Next**, the driver will be installed and you may be asked for the original Windows 2000 CD/disk.
6. For the first time installation, please click **Network** icon in **Control Panel** to add Protocols, Client and Service if you needed.
7. Reboot the machine and the card will be fully functional.

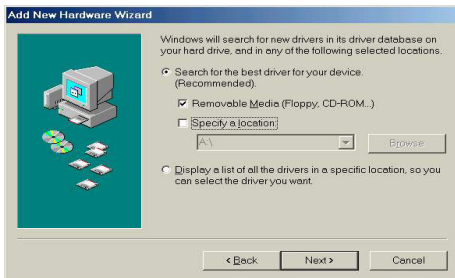
Windows ME Installation

1. Once the PC Card is well connected to your computer, Windows ME will automatically

detect the new device. Select **Specify the Location of the driver...** and click **Next**.



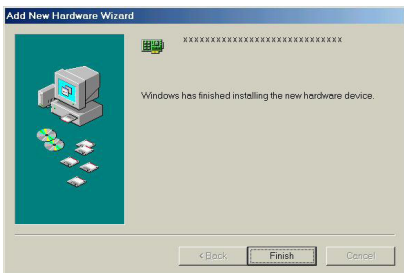
2. Insert the device driver disk into the floppy disk drive on your system. Select **Removable Media (Floppy, CD-ROM...)** and click **Next**.



3. Click **Next** to continue.



4. Windows will copy the appropriate driver to your system. If Windows ME asks you to supply your original Windows ME installation CD-ROM, load it on the CD-ROM drive.
5. Click **Finish** to complete the software installation.



Windows XP Installation

1. Once the device is well connected, Windows will detect the new device and prompt you to insert the network device driver. Click **Install from a list or specific location...** and click **next**.



2. Insert the device **Driver Disk** into the floppy disk drive of your system. Select **Search for the removable media...** and click **Next**.



3. Windows will start searching for the appropriate driver for the installation. When the screen appears as below, click **Continue Anyway** to proceed.



4. Wait for seconds while Windows copies the appropriate driver to your system.
5. Click **Finish**. The software installation for this network device is now completed.

